

A light blue map of the Nordic region, including Greenland, Iceland, Norway, Sweden, Finland, and Denmark. The map shows the Arctic Circle as a dashed line and the North Atlantic Ocean to the west. Labels for various countries and regions are in small, light green text. Major cities like Helsinki, Stockholm, and Copenhagen are marked with small circles. The title 'Resources and competences in networking' is overlaid in large, bold, dark red font.

# Resources and competences in networking

**Antra Carlsen**

**Nordic Network for Adult Learning  
(NVL)**

**[www.nordvux.net](http://www.nordvux.net)**

**nvl**

# Success factors

- Purpose of networking and corresponding membership
- Balanced (not necessarily equal) needs
- Genuine interest in growth / change
- Give and take (expertise pooling and sharing) - "you get what you give"
- An open invitation: come, learn together and develop your own path
- Generous support (time, money, positive attitude)
- Meeting places and quality
- Process is important ... Results
- Continuity and at the same time constant development
- Stay or leave?

# Nordic AE networks - purpose

Networks as:

- ✓ policy promoters
- ✓ added value to projects and national / local initiatives
- ✓ synergies at national / regional / European levels
- ✓ effective and efficient response to current and emerging needs
- ✓ interest awakeners and motivators
- ✓ support to staff development

## **Nordic Competence Network -** efficient response to needs (2009-12)

- AE practices that help people and/or society to deal with changes / crisis in society and working life, to **preserve the Nordic welfare model**
- Analyse and identify what characterizes education and training that succeed in strengthening both individuals and organisations in the perspective of **managing "change and crisis"**
- Results used to make a call for a political / structural change and as **guidelines** for next generation of projects and initiatives - **change**

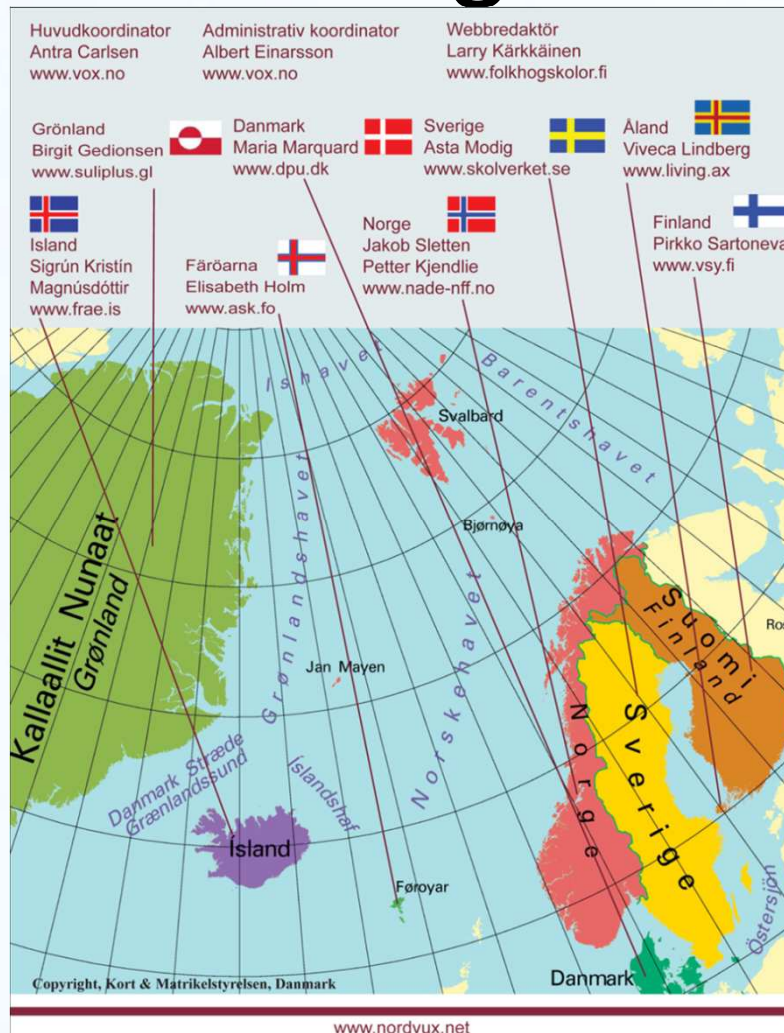


# The development of Nordic – Baltic LLL co-operation – interest in growth

- 1992 - 2000
- Loose networks with many small actors
- Dependence on central coordination and support
- External financing
- 2000 - 2010
- More concentrated and negotiated / agreed upon needs
- External financing + own projects and initiatives
- Dynamic and independent networks, BUT few

# Nordic Network for Adult Learning

## - give and take





# Networks need support



NVL (11 thematic sub-networks) as a link between policy and practice, development projects, forum for dialogue and a meeting place

- **SVL – Advisory group in AE**, yearly priorities for NVL and AE cooperation within Nordplus Framework Programme. 2011 - 8,3 mil EUR
- **Finland - chairmanship programme 2011:** multicultural, international and competent Norden
- **NCM strategy plan 2011-13:** *Norden – competence for green development and welfare*

# Meeting place and networking



- A **virtual and physical meeting** place among networks and projects, for educators and for decision makers
- A dissemination arena for **thematic networks and projects** through conferences, seminars, information channels
- A meeting-place for expert networks to initiate comparative analyses and report work, and **suggest new policy initiatives** to the Nordic Council of Ministers



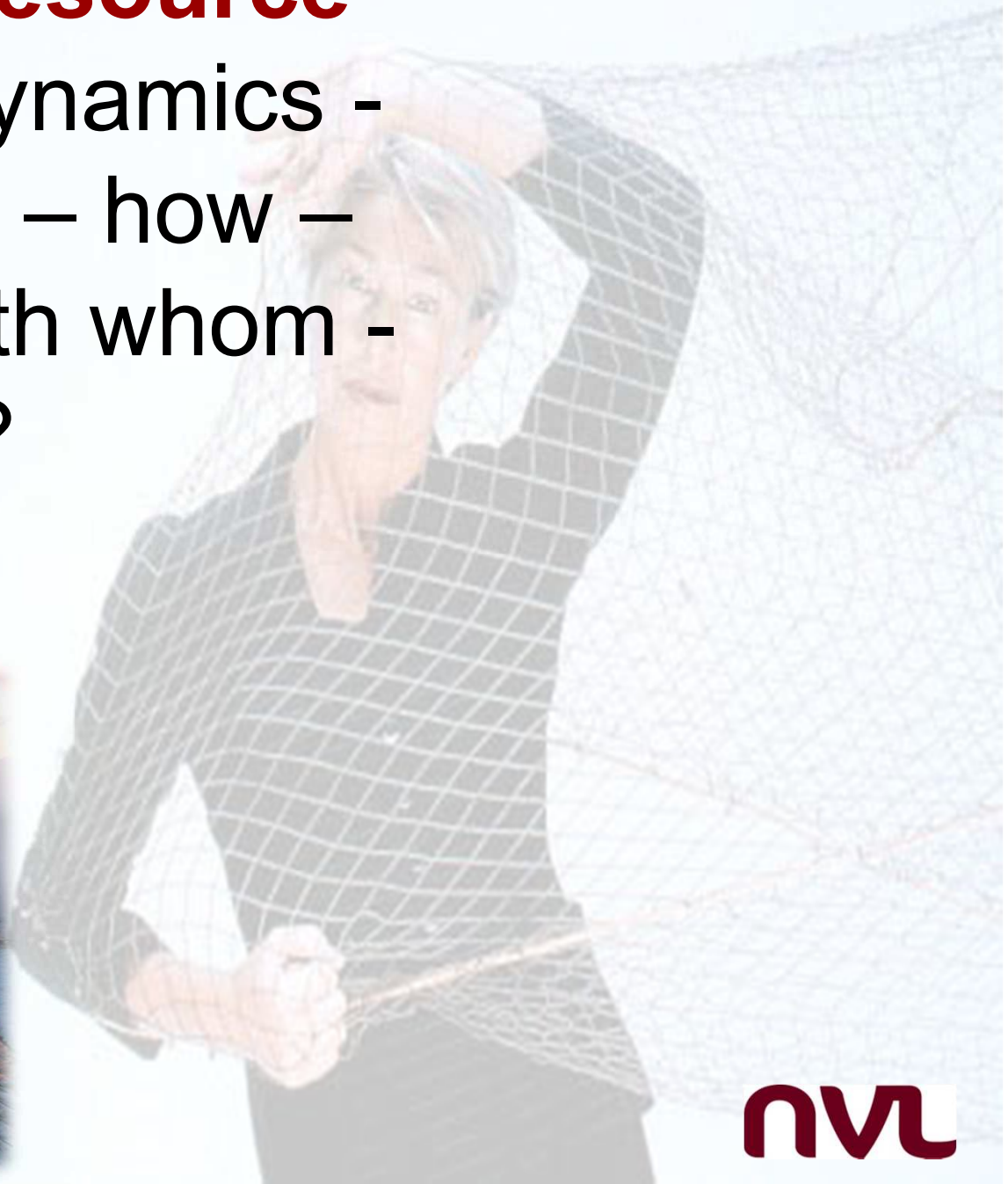
# **Nordic Expert Network on Validation –** pooling of resources, added value to projects

- 2006 – 2007: Structure and methodology development; learning **practice exchange**
- 2008 - 2010: Agreed **policy work**: 15 Nordic recommendations to the decision makers
- 2011 – 2012: Professional **standards** and competence development in validation and mapping of the existing validation research

# Taskforce on Innovation in AE (2006-10) - quality and staff development

- Investigate **new competence requirements** that adult educators face in new/changing learning situations
- Map **“innovative best practice”** and experiences within creative and innovative continuing education
- Design, carry out and evaluate a **development project** (pilot courses for AE-ors) with innovative content
- Establish a **contact network** among organisations providing AE-or training courses for **carrying on the specialised, cross-sectoral further training initiatives** focusing on professional and cultural competences
- **Recommend** and formulate suggestions for in-service training courses for adult educators

Network as a **resource** –  
continuity – dynamics –  
development – how –  
how long – with whom –  
why?



**nvl**